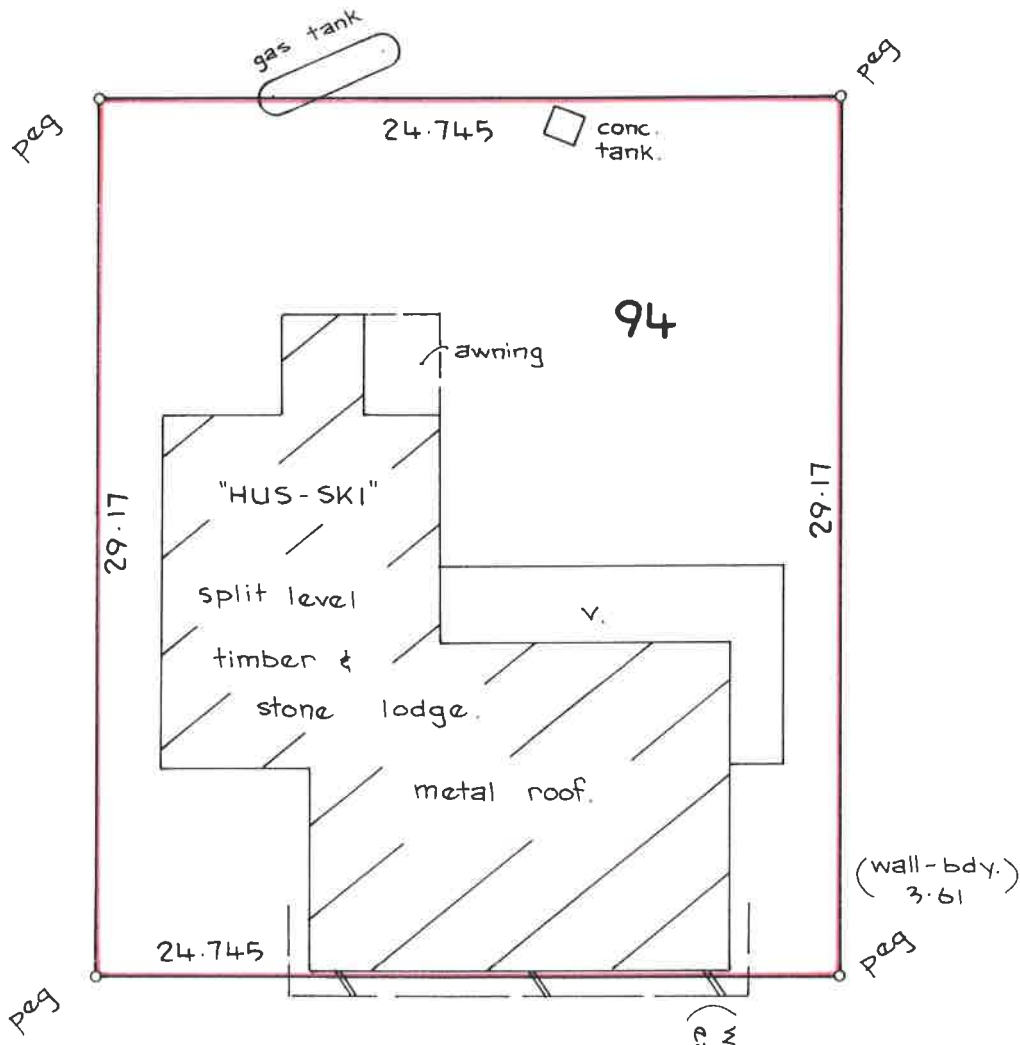




- 1 OCT 2013

DEVELOPMENT ASSESSMENT AND
SYSTEMS PERFORMANCE
RECEIVED - JINDABYNE



Services other than as shown may also exist and their positions should be verified with the relevant authorities prior to the commencement of any construction works.

M. Cellin

PETER W. BURNS PTY LIMITED
REGISTERED LAND MINING & ENGINEERING SURVEYORS

REGISTERED SURVEYOR

Head Office: 88 Commissioner St. Cooma NSW 2610
Postal Address: P.O. Box 737, Cooma NSW 2610
Phone: Cooma (064) 523221 Jindabyne (064) 562443 Fax (064) 524230
A.C.N. 002 953 291
COUNTRY LAND MANAGERS AND DEVELOPMENT SERVICES

Date: 8.5.96
Reference: 2533/94

DIMENSIONS ARE IN METRES